

RISE OF THE RANGATAHI



HEI MATAU PADDLERS

Rise of the Rangatahi - Junior Waka Ama Event

Welcome to the Rise of the Rangatahi, a junior-only waka ama event hosted by Hei Matau Paddlers in Rotorua. This exciting event is designed for Intermediate, J16, and J19 divisions, with races tailored to suit young paddlers' abilities and enthusiasm.



Venue: Rotorua Ngongotaha Waterfront reserve. Access Via Reeme street

Date: Saturday 24th October 2026

Divisions: Intermediate, J16, J19 (Boys and Girls)

Race Types and Distances:

- Singles & Doubles (W1, W2): 2km for all divisions, 4km for J16 and J19
- Team Races: 2km for Intermediate, 8km for J16 and J19

Entry Fee: \$20 per paddler to compete in as many races as you want (one payment per club)

Entry closed October 21st 2026.

Sponsors: Paddling Alliance Industries – Tai Paddles

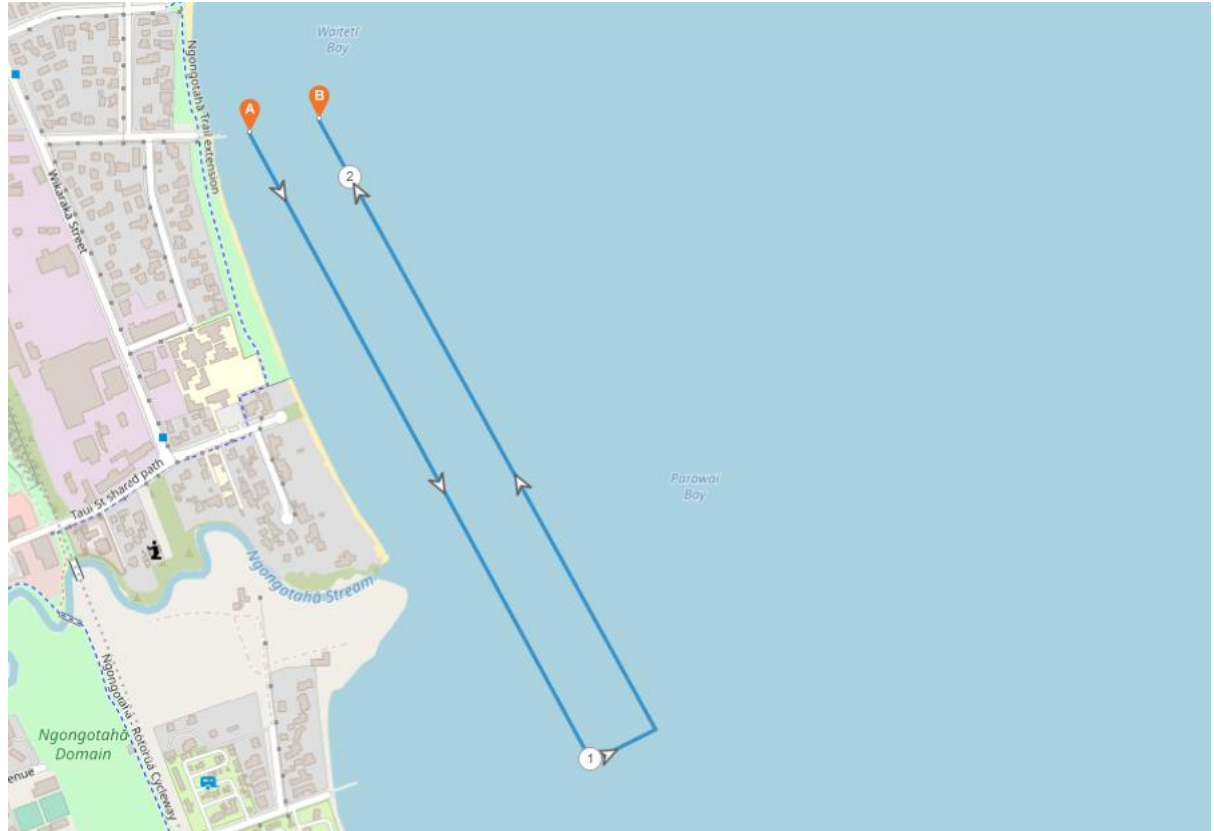
Events:

- 2km singles and doubles races
- 2km team races
- 4km singles and doubles races
- 8km team races

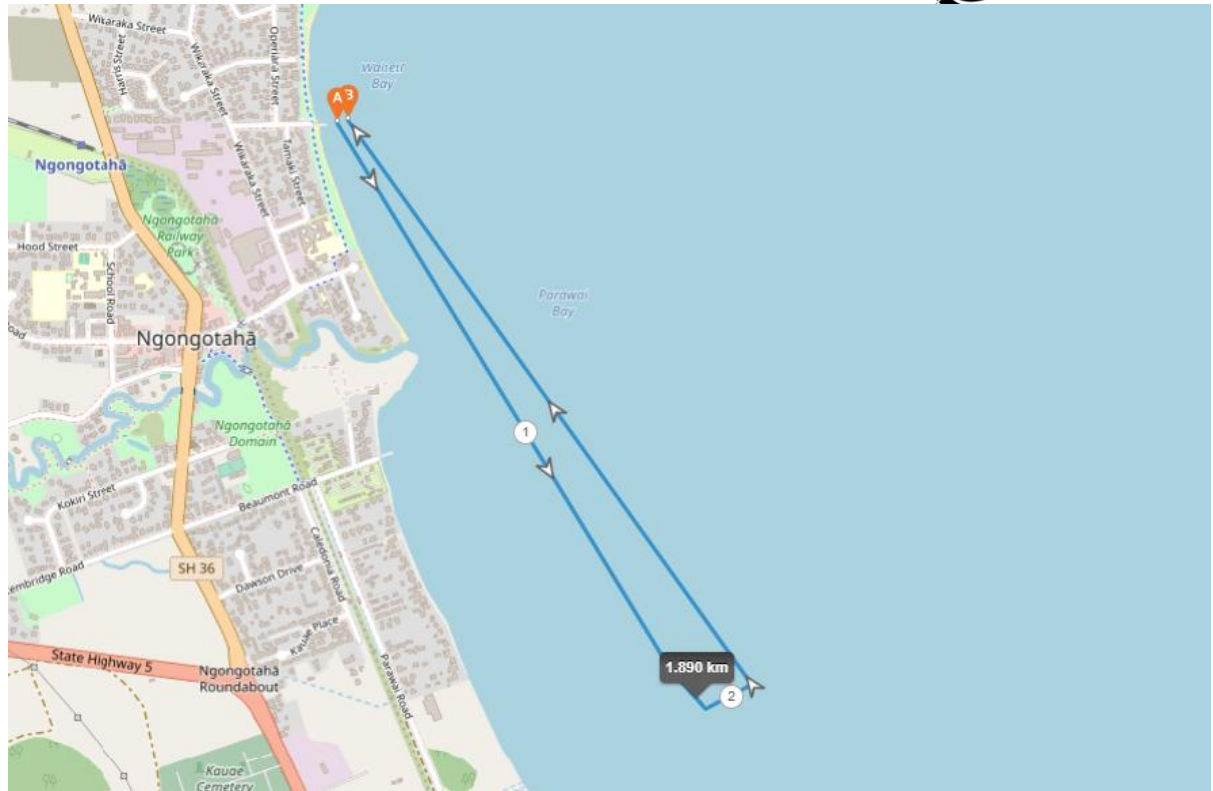
Schedule:

- 7:30 - Registration
- 8:30 - Race Briefing
- 9:00 - 2km Singles and Doubles (All Divisions)
- 9:40 - 2km Intermediate Girls
- 10:10 - 2km intermediate Boys
- 11:00 - 4km Singles and Doubles (J16 & J19)
- 12:00 - 8km Girls Races (J16 & J19)
- 12:10 - Prizegiving for Intermediate races
- 13:00 - 8km Boys (J16 & J19)
- 14:00 - Prizegiving

Race Course: 2km Course



Race Course 4km Singles and 2x for 8km team course



How to enter:

Your club Rep can enter all entries online. www.wakaama.co.nz

Once entry is in, please make one payment per club to:

Hei Matau Paddlers

06-0413-0365366-06 Please use your club name as reference.

Entry closed 21st October 2025

Payment made 22nd October 2025

Compulsory Equipment:

- 1 life jacket (PFD) per paddler – mandatory for all divisions
- 2 bailers (W6)
- 1 bailer (W1)
- 2 spare paddles (W6)
- 1 spare paddle (W1 -OC1 – OC2)
- 25m tow rope (W6) attached and ready for towing
- Cell phone in waterproof bag or VHF Radio on Channel TBC at briefing
- Bilge pumps may be used for safety
- Teach your tamariki how to use safety equipment please

Race Course:

- Courses will be adjusted to avoid side winds
- Turn buoys will be placed at 1km and 2km marks

- Coaches may follow paddlers but must stay clear of the race paths
- No lead boats – teams are responsible for knowing the course

Penalties:

Teams and individuals that do not complete the course will be disqualified. No protests. Honest safe racing only.

Biosecurity Checks:

All kaihoe will have to follow CCD procedures under the Biosecurity Act and the Te Arawa Lakes Controlled Area Notice to prevent the spread of the Asian Golden Clam (*Corbicula fluminea*). Any waka not checked off as having completed this process will not be permitted to race. Waka that have been on the Waikato River in the 30 days prior to the race must be cleaned following MPI protocols, and evidence of this will be required. Controlled Area Notice: *Corbicula fluminea* Te Arawa Lakes Consolidated 2025

Bad weather:

The Race Director reserves the right to cancel the race if conditions change unexpectedly and are deemed unsafe for paddlers.

Team Managers:

- Team Managers must attend morning race briefing.
- Turn buoys will be placed at **1km and 2km marks** see course map.
- **8km races** will be **two laps** of the 4km course
- Course angles will be adjusted to **avoid side winds** for safety
- **No lead boats** – teams must know the course
- **Coaches may follow** paddlers but must stay clear of the race path

Finish line:

All finishers must pass through between the jetty and finish buoy and yell out their race number. Paddlers too far away will not get times recorded. See photo

